

WATT'S HAPPENING

SCENIC RIVERS ENERGY COOPERATIVE
LANCASTER, DARLINGTON AND GAYS MILLS, WISCONSIN

Deadline Quickly Approaching

Youth Leadership Congress • UW- River Falls • July 25-27, 2018

The WECA Youth Leadership Congress is a dynamic three-day event for youth leaders across Wisconsin to develop their leadership skills and to learn about the purpose, operation and scope of cooperative business.

Who should apply?

Students that will be going into 10th, 11th or 12th grade next fall and have parents or grandparents that are members of Scenic Rivers Energy Cooperative.

**Yes, I would like to attend the
2018 Youth Leadership Congress
July 25-27 at UW- River Falls.**

Name: _____

Parent or guardian: _____

Address: _____

Telephone no.: _____

Email: _____

Highschool: _____ Grade Next Fall: _____

Please return this form to

**SREC, 231 N. Sheridan St., Lancaster, WI 53813 or hpierce@srec.net
SREC must receive information by June 15th**



Scenic Rivers Energy Cooperative participates in the Crawford County Safety Day by showing students the hot line demonstration and discussing with them the dangers of powerlines and how to be safe around them.



Maintain the Safe Zone Around Pad-mounted Transformers

Jordan Overbee was driving to work when he saw them. The elementary school-aged youngsters were just waiting for the school bus, but they were sitting on a big green metal box. Inside was vital electrical equipment, distributing electricity to several homes on the street.

“It was a bad place for a school bus stop,” Overbee recalled. “There were five kids gathered there to wait for a bus, sitting, talking and playing for a few minutes because it was between driveways.”

As manager of operations for Wake Electric Membership Corp., Overbee knows a lot about pad-mounted transformers. They make up about half of the transformers used across the Youngsville, North Carolina-based co-op’s system.

“Transformers change voltage from higher levels to voltages people use in their homes for their electronics, appliances and lighting,” said Overbee. “Each of our transformers can be vital to providing electricity to several homes.”

After seeing the kids waiting at that same transformer several days in a row, Overbee pulled over and talked to some of the parents. He explained that high voltage electricity flowed through the transformer inside the casing, and encouraged them to move a safer distance away.

“The parents hadn’t thought much about it, so once I explained the risks, they were happy to move to another driveway,” Overbee said.

While overhead power lines are mounted on utility poles and substations are protected by security fences, pad-mounted transformers, switch boxes and pedestals are at ground level.

“We have about 5,400 pad mounted transformers on our system,” said Van Crawford, vice president of operations at Peace River Electric Cooperative, headquartered in Wauchula, Florida. “Of that number, 4,800 of them are located in the western district of our service territory.”

In many newer subdivisions and residential developments, overhead lines are no longer an option. Burying power lines also reduces potential system damage from high winds and severe storms. While consumers seldom see technicians working on the transformers unless there are power outages, they are regularly inspected by co-op crews riding through neighborhoods.

“We can see fault indicators from the road,” said Crawford, adding that one of the biggest concerns is safe access when repairs or component adjustments must be made. “That’s why it’s important that landscaping and other barriers be kept clear of co-op equipment.”

Co-op technicians need at least 10-foot clearance at the opening side of a pad-mounted transformer. Approximately four feet of open space is preferable at the rear and on the sides of the metal housing.

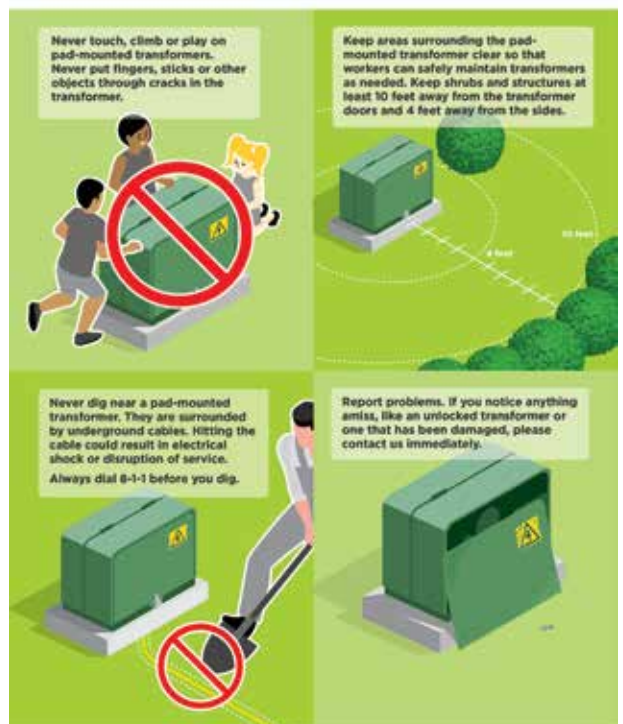
That distance allows for tool use, including hot sticks—typically eight feet in length, used to work with energized equipment. It also ensures that one or two technicians working on a transformer have space to maneuver should they have to back away if problems occur.

“We once had a member use a transformer box as a work bench platform, and obviously we had to have him remove it,” said Crawford. “We always try to explain the risks, and most members are more than

continued on page 3 . . .

Avoid the Big Green Box

Please stay away from pad-mounted transformers (the big green box). While safe, they are not meant for touching, climbing or playing. Pad-mounted transformers carry high voltages of electricity that serve many homes in our communities.



Summer Peak Alerts

During the summer Scenic Rivers Energy Cooperative announces peak alerts periodically through the summer months. We notify our members through area radio stations. Our message asks that energy be conserved between noon and 7:00 p.m.

Why is a peak alert necessary?

- Because of the high demand for electricity on the regional grid, this demand leads to higher power costs. Members can help keep rates stable and affordable by conserving electricity during the Peak Alert period.

How can members conserve electricity?

- Turn up thermostat. We recommend 78 degrees or warmer – especially if no one is home.
- Leave home to run errands.
- Run the dishwasher after 6:00 p.m.; open the door to let dishes air dry.
- Do laundry before or after the Peak Alert and hang up clothes to air dry. Use cold water when you wash clothes.
- Use the microwave or grill instead of the oven to cook; go on a picnic for dinner.
- Find a new book or magazine to read instead of watching TV.
- Break out the board games instead of playing video games.

Summer Energy-Saving Tips

Costs associated with cooling your home can make up a large portion of your summer electric bills. Stay cool and save money with these energy efficiency tips!



NO-COST TIPS

Close blinds and drapes during the day to keep heat out.



Set your thermostat to 78 degrees when you are home. Set it to a higher temperature when you're away.



Turn off lights and ceiling fans when you leave a room.



LOW-COST TIPS

Plant trees and shrubs to shade the exterior of your home.



Replace disposable air filters (or clean permanent filters) once a month to maximize efficiency.



Use solar lighting to brighten up your outdoor space. Solar lights are easy to install, low maintenance and provide free electricity.

Continued. . . Maintain the Safe Zone Around Pad-mounted Transformers

willing to cooperative once they understand.”

Pad-mounted transformers are connected to primary high voltage lines, and secondary lines can extend in several directions to distribute power to homes and businesses. That’s why it’s important to check with Scenic Rivers Energy Cooperative before planting shrubs or trees, setting fence posts, installing sprinkler systems and digging where it might damage underground lines.

Scenic Rivers Energy Cooperative recommends that you contact 811/Call Before You Dig for a site assessment and marking before proceeding with projects that might disrupt utility service,” said CEO Lucas.

While pad-mounted transformers in developed, suburban or urban areas are regularly inspected for damage from vehicles, many utilities use marking sticks or pennants to alert tractor, snow plow or heavy equipment operators of their locations.

Scenic Rivers Energy Cooperative also encourages public works and transportation departments to keep their equipment, supplies and road debris at least 15 feet away from pad-mounted transformers.

Derrill Holly writes on cooperative issues for the National Rural Electric Cooperative Association, the Arlington, Va.-based service arm of the nation’s 900-plus consumer-owned, not-for-profit electric cooperatives. ■

Recipes

Thank you Cathy Skaife (Platteville) for sharing your recipes!
"When I make these up I do 4 at a time and put them in Mason jars. Rise, shine and enjoy! They are delicious!!"

Blueberry and Honey Overnight Oats

- 1/2 cup Quaker Oats
- 1/2 cup milk
- 1/4 cup Greek yogurt
- 1/4 cup blueberries
- 1 Tablespoon honey

Add Quaker Oats to your container of choice, pour in milk, and add blueberries and Greek yogurt. Sweeten by topping with honey before refrigerating. Place in fridge and enjoy in the morning.



Apple Cinnamon Crunch Overnight Oats

- 1/2 cup Quaker Oats
- 1/2 cup milk
- 1/2 cup diced apple
- 1 teaspoon honey
- 1/8 teaspoon cinnamon
- 1 tablespoon granola (for topping)

Add Quaker Oats to your container of choice, pour in milk, and add in diced apple. Sweeten by topping with honey and cinnamon before refrigerating overnight. Top with granola in the morning.



Vegetation Management

Zielie's Tree Service will continue trimming on the Jerrett Substation in Grant County.

Mi-Tech Services Inc will continue to test poles in Grant County in Lima, Platteville, Ellenboro and Harrison Township. If time permits they will move to Benton, New Diggings and Elk Grove Townships in Lafayette County.

Badgerland Utility Solutions will start right-of-way vegetation maintenance (brush control) on the Eastman Substation in Crawford County. Next they will move to the Hurricane Substation in Grant County. DPC will be sending out letters to these members notifying them of the herbicide treatment.

It is important for SREC to maintain its rights-of-way for the following reasons:

- Accessibility for field crews, vehicles and equipment
- Fire prevention
- Reliable electric service
- Quality service with the reduction of outages and blinks
- Safety for workers and the public
- Meeting state and federal code requirements

On a daily basis, SREC employees and contractors are working throughout the area, at times on your property, to operate and maintain the electric system and our rights-of-ways. We appreciate your cooperation. If you have questions, please contact Jay at jgardner@srec.net or call 800-236-2141, ext. 566.

Energy Efficiency Tip of the Month

Laundry Tip: Use rubber or wool dryer balls, which help separate clothing in the cycle, providing better airflow and a shorter drying time. Wool dryer balls can help absorb moisture, which also reduces drying time.

Source: energy.gov



WATT'S HAPPENING

Watt's Happening is published monthly as an information service to the member-owners of Scenic Rivers Energy Cooperative.

Any questions or comments can be directed to *Watt's Happening*, c/o Heidi Pierce, Editor, Scenic Rivers Energy Cooperative, 231 North Sheridan, Lancaster, WI 53813 or telephone (608) 723-2121 or toll free 800-236-2141.

www.sre.coop

Steve Lucas CEO
Heidi Pierce Editor

Our board of directors consists of Chuck Simmons, Don Schaefer, Sandra Davidson, Ellen Conley, Jack Larson, Larry Butson, Delbert Reuter, Steve Carpenter and Marcus Saegrove.



printed on recycled paper