

# WATT'S HAPPENING

SCENIC RIVERS ENERGY COOPERATIVE

LANCASTER, DARLINGTON AND GAYS MILLS, WISCONSIN



## 2018 Calendar Photo Contest

*Members must take pictures within SREC service area that captures life in rural Wisconsin (seasons, wildlife, landscape, etc.). Photos must be landscape orientation with at least 300 dpi and emailed to [hpierce@srec.net](mailto:hpierce@srec.net). The deadline is August 21st. The entry form and additional photo contest details are on our website [www.sre.coop](http://www.sre.coop) under News & Community.*

## Youth Leadership Congress Deadline is Approaching UW- River Falls • July 26-28, 2017

The WECA Youth Leadership Congress is a dynamic three-day event for youth leaders across Wisconsin to develop their leadership skills and to learn about the purpose, operation and scope of cooperative business.

### Who should apply?

Students that will be going into 10th, 11th or 12th grade next fall and have parents or grandparents that are members of Scenic Rivers Energy Cooperative.

**Yes, I would like to attend the  
2017 Youth Leadership Congress  
July 26-28 at UW- River Falls.**

Name: \_\_\_\_\_

Parent or guardian: \_\_\_\_\_

Address: \_\_\_\_\_

Telephone no.: \_\_\_\_\_

Email: \_\_\_\_\_

Highschool: \_\_\_\_\_ Grade Next Fall: \_\_\_\_\_

*Please return this form to  
SREC, 231 N. Sheridan St., Lancaster, WI 53813 or [hpierce@srec.net](mailto:hpierce@srec.net)  
SREC must receive information by June 26th*

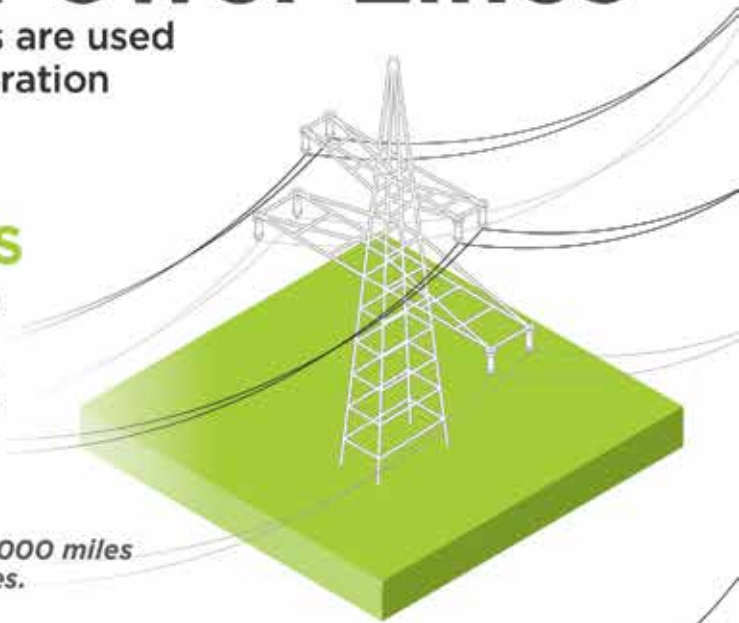
# A Field Guide to Overhead Power Lines

High-voltage transmission lines are used to deliver electricity from generation plants to consumers.

## HIGH-VOLTAGE TRANSMISSION LINES

Large amounts of power, measured by watts, are delivered by transmission lines. These lines are energized with very high voltage in order to move the power long distances with minimal losses. Insulators on the towers prevent the power from flowing to the towers or the ground.

*Electric cooperatives own and maintain 65,000 miles (6 percent) of the nation's transmission lines.*



## SUBSTATIONS AND SUB-TRANSMISSION LINES

Transformers at transmission substations reduce the voltage from transmission levels to sub-transmission levels, typically ranging from 115,000 volts to 34,500 volts. Sub-transmission lines deliver power over shorter distances to distribution substations and large industrial sites. At distribution substations and large industrial sites, transformers reduce the voltage to a lower level, typically 7,200 volts or 14,400 volts.



## DISTRIBUTION LINES

The lines typically seen along rural roads and next to homes are generally single phase distribution line, energized at 7,200 or 14,400 volts. Transformers on the utility poles lower the voltage to between 120 and 480 volts to serve residential homes and small businesses.

*Electric cooperatives own and maintain 2.6 million miles (42 percent) of the nation's distribution lines.*



## ***Please make room for roadside crews***

**W**hen the power goes out, so do Scenic Rivers Energy Cooperative's line crews. Lineworkers are the first to respond after an outage occurs, and they work tirelessly to restore power to the communities we serve.

If you're traveling and see one of our crews on the side of the road, we kindly ask that you move over if possible and give them a little extra space to work. We deeply care about the safety of all, and this extra precaution ensures just that.

If you approach a crew while traveling on a two-lane road, moving over to the next lane might not be an option. In this case, we simply ask that you slow down when approaching roadside crews. If you approach a crew while traveling on a four-lane road, and safety and traffic conditions allow, we ask that you move over into the far lane.

Utility crews aren't the only ones who could use the extra space. Emergency responders, such as police officers, firefighters and emergency medical technicians, often find themselves responding to emergency situations near busy roadways. We ask that you follow the same procedures mentioned above to help keep these crews safe.

There's plenty of room for all. Let's work together to keep everyone safe on our local roadways.

*Abby Berry writes on consumer and cooperative affairs for the National Rural Electric Cooperative Association, the Arlington, Va.-based service arm of the nation's 900-plus consumer-owned, not-for-profit electric cooperatives. ■*

**PLEASE MOVE  
OVER FOR  
EMERGENCY  
AND UTILITY  
CREWS**

**If you see police,  
firefighters, utility crews  
or other emergency  
personnel on the side  
of the road, please slow  
down and move over  
when possible.**

**Together, we can  
keep our crews safe.**



## Recipes

Thank you Cathy Skaife (Platteville) for sharing your Classic Creamy Slaw recipe!

### Classic Creamy Slaw

- 1 (14 oz.) bag of shredded slaw
- 1 cup of mayonnaise or Miracle Whip
- 5 tablespoons sugar
- 1 teaspoon celery seed
- 1 teaspoon prepared yellow mustard
- 3 teaspoons apple cider vinegar

In a large bowl put the bag of shredded slaw. In a small bowl, whisk together remaining ingredients. Add to slaw. Mix together. The slaw dressing can be made in advance and stored in a sealed jar in the refrigerator. It will keep for weeks. I usually double the recipe for company.



Thank you Rita Kruser (Cuba City) for sharing your Oven Fried Chicken Recipe!

### Oven Fried Chicken

- 3 Tbsp Butter or Margarine
- 1 c. Bisquick Baking Mix
- 1-1/2 tsp Paprika
- 1-1/4 tsp Salt
- 1/4 tsp Pepper
- 3 lbs Chicken, cut up (all legs work good too!)



Heat oven to 425 degrees. Melt butter or margarine in a 9x13x2 inch pan. Mix baking mix, paprika, salt and pepper. Coat chicken. Place chicken skin side down in pan. Bake uncovered for 35 minutes and then turn and bake until done, about 15 minutes.

## Energy Efficiency Tip of the Month



Periodically inspect your dryer vent to ensure it is not blocked. This will save energy and may prevent a fire. Manufacturers recommend using rigid venting material – not plastic vents that may collapse and cause blockages.

Source: U.S. Dept. of Energy

## Vegetation Management

Zielie's Tree Service will be working on the north and west circuits of the Hurricane Substation in Grant County and possibly starting on the Steuben Sub in Crawford County.

Mi-Tech Services Inc will be starting the pole changes. SREC sent out postcards to the member's that will be affected.

SREC will spray the Glen Haven Substation in Grant County and Badgerland Utility Solutions LLC will spray Fennimore in Grant County, Shullsburg, Crawhall and Lamont in Lafayette County. SREC sent out letters to member's that will be affected.

### It is important for SREC to maintain its rights-of-way for the following reasons:

- Accessibility for field crews, vehicles and equipment
- Fire prevention
- Reliable electric service
- Quality service with the reduction of outages and blinks
- Safety for workers and the public
- Meeting state and federal code requirements

On a daily basis, SREC employees and contractors are working throughout the area, at times on your property, to operate and maintain the electric system and our rights-of-ways. We appreciate your cooperation. If you have questions, please contact Jay at [jgardner@srec.net](mailto:jgardner@srec.net) or call 800-236-2141, ext. 566.

## WATT'S HAPPENING

*Watt's Happening* is published monthly as an information service to the member-owners of Scenic Rivers Energy Cooperative.

Any questions or comments can be directed to *Watt's Happening*, c/o Heidi Pierce, Editor, Scenic Rivers Energy Cooperative, 231 North Sheridan, Lancaster, WI 53813 or telephone (608) 723-2121 or toll free 800-236-2141.

[www.sre.coop](http://www.sre.coop)

Steve Lucas ..... CEO  
Heidi Pierce ..... Editor

Our board of directors consists of Chuck Simmons, Don Schaefer, Sandra Davidson, Ellen Conley, Jack Larson, Larry Butson, Delbert Reuter, Steve Carpenter and Marcus Saegrove.



printed on recycled paper