

# WATT'S HAPPENING

SCENIC RIVERS ENERGY COOPERATIVE

LANCASTER, DARLINGTON AND GAYS MILLS, WISCONSIN

## ANNUAL MEETING PROGRAM

April 14, 2018

9:00 a.m.

- Registration Begins
- Informational Booths are open.

9:30 a.m.

- Meeting called to order
- Invocation
- Introduction of Directors and Guests
- Determination of Quorum
- Minutes of the last Annual Meeting
- Election of Directors
- Audit Committee Report
- Treasurer's Report
- CEO Report
- Question and Answer Session
- Unfinished Business
- New Business
- Election Results
- Scholarship Winners
- Prize Drawings
- Adjournment
- Lunch will be served

### • Scholarship Drawing

Winners *must* be present to win and be present for a picture that takes place after the meeting adjourns.

### • Prize Drawing

This is for members who mailed in their ballots. They do not need to be present to win. The winners will have their certificate applied directly to their electric bill.

- o Six (6) \$50 certificates.

### • Prize Drawing

To enter, members must bring registration card that is on the back cover of this report. You must be present to win. The winners will have their certificate applied directly to their electric bill.

- o One (1) \$100 certificate
- o Three (3) \$50 certificates
- o Ten (10) \$25 certificates



## Lineworker Appreciation Day



### Lancaster office:

Jason Knapp, Shane Crowley, Joe Ihm, Travis Klein, Patrick Pennekamp, Matt Rasmussen, Tory Henkel.

### Staking Engineers:

Chad Olmstead, Phil Schneider.

### Darlington office:

Jim Wolf, Lucas Ritchie, Kevin Weber, Matt Ritchie.

### Gays Mills office:

Andy Kilcoyne, Derrick Heisz, Robert Tank, Daniel Welsh, Earl Winsor.

## The power behind your power

As April arrives, it brings with it the showers that produce spring flowers. It also heralds the beginning of a potentially stormy season that can inherently include power outages. While Scenic Rivers Energy Cooperative strives to provide reliable electricity to our members, there are times when Mother Nature has other plans. Most of us can ride out a storm from the comfort and convenience of our homes. However, there is a group of professionals that spring into action when the weather takes a turn for the worst – co-op lineworkers.

### One of the most dangerous jobs

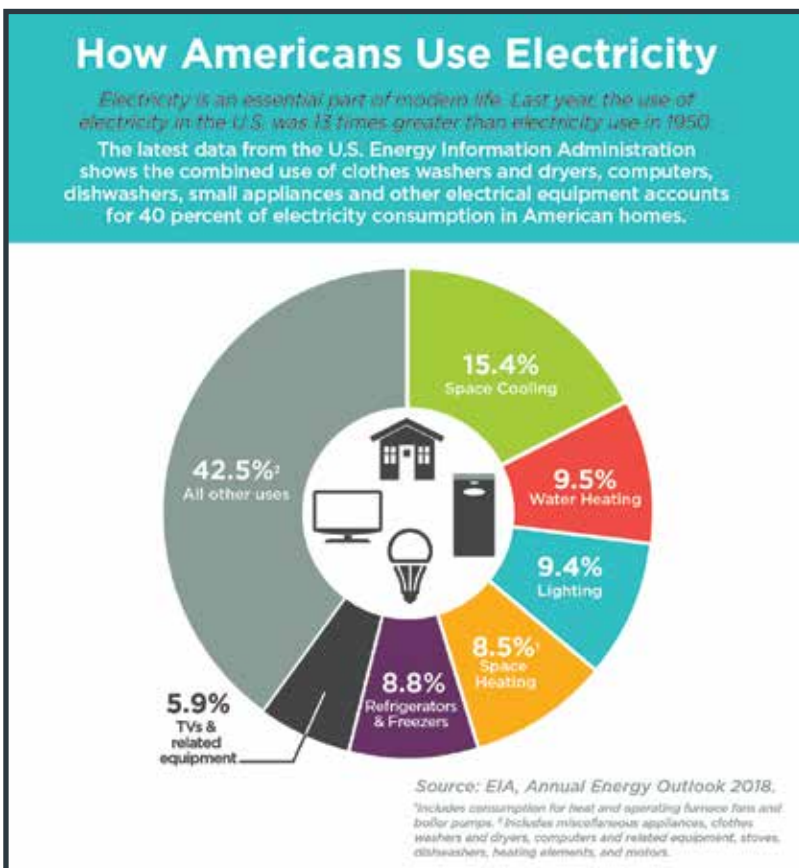
Braving stormy weather and other challenging conditions, lineworkers often must climb 40 or more feet in the air, carrying heavy equipment to restore power. Listed as one of the 10 most dangerous jobs in the U.S., lineworkers must perform detailed tasks next to high voltage power lines. To help keep them safe, lineworkers wear specialized protective clothing and equipment at all times when on the job. This includes special fire-resistant clothing that will self-extinguish, limiting potential injuries from burns and sparks. Insulated and rubber gloves are worn in tandem to protect them from electrical shock. While the gear performs a critical function, it also adds additional weight and bulk, making the job more complex.

In addition to the highly visible tasks lineworkers perform, their job today goes far beyond climbing to the top of a pole to repair a wire. They are also information experts that can pinpoint an outage from miles away and restore power remotely. Line crews use their laptops and cell phones to map outages, take pictures of the work they have done and troubleshoot problems. In our community, Scenic Rivers Energy Cooperative lineworkers are responsible for keeping 3,500 miles of lines across three counties working, in order to bring power to your home and our local community 24/7, regardless of the weather, holidays or personal considerations.

While some of the tools that lineworkers use have changed over the years, namely the use of technology, the dedication to the job has not. Being a lineworker is not a glamorous profession. At its essence, it is inherently dangerous, requiring them to work near high voltage lines in the worst of conditions, at any times of the day or night. During hurricanes, wildfires or storms, crews often work around the clock to restore power. While April is known for spring showers, there is also a day set aside to “thank a lineworker.”

Lineworker Appreciation Day is April 9. So during the month of April, if you see a lineworker, please pause to say thank you to the power behind your power. Let them know you appreciate the hard work they do to keep the lights on, regardless of the conditions.

*Anne Prince writes on consumer and cooperative affairs for the National Rural Electric Cooperative Association, the Arlington, Va.-based service arm of the nation's 900-plus consumer-owned, not-for-profit electric cooperatives.* ■



## Change Habits to **BEAT THE PEAK**

You can beat the peak (and save money!) by decreasing your power use when energy demand and prices are at their highest. Here are a few tips to help you get started:

### **Laundry for Less:**

Full loads mean fewer cycles, and washers and dryers run in the late evenings add less heat and humidity to the home. Energy can cost less outside of peak hours.



### **Cool Off/Calm Down:**

Turn off unnecessary lighting and electronics that generate heat, resist the urge to turn down the thermostat and remember, lower fan settings use less energy.



### **Intramural Competition:**

Online gaming with each active player using their own computer, display, gaming console and internet connection gets pricey. Play each other at home on one screen and save.



### **Countertop Convenience:**

Range or oven cooking can really warm up a kitchen. Microwaves, convection ovens, induction cooktops, Crock-Pot® and toaster ovens put more cooking heat where you need it.



## 2019 Calendar Photo Contest

Members must take pictures within SREC service area that captures life in rural Wisconsin (seasons, wildlife, landscape, etc.). Photos must be landscape orientation with at least 300 dpi and emailed to [hpierce@srec.net](mailto:hpierce@srec.net). The deadline is August 21st. The entry form and additional photo contest details are on our website [www.sre.coop](http://www.sre.coop) under News & Community.





## Recipes

Thank you Diane Navin (Hubertus) for sharing your Éclair Torte!

### Éclair Torte

#### Dough:

- 1 c. Water
- 1 c. Flour
- 1 stick of butter (1/2 cup)
- 4 Eggs



Grease a 9x13 pan. Boil the water and butter. Remove from heat and stir in flour and beat in eggs one at a time. Spread in the pan and bake at 400 for 30 minutes. Cool.

#### Center:

- 1 - 8oz Cream Cheese (room temperature)
- 2-1/2 c. Milk
- 1 Large Box Instant Vanilla Pudding

Mix cream cheese and milk. Slowly add pudding and mix well. Spread on cooled dough.

#### Topping:

- 1 - 12 oz Cool Whip
- Ghiradelli Chocolate Sauce

Spread the cool whip over the pudding and then drizzle with chocolate sauce. Store in the refrigerator.

Thank you Rita Kruser (Cuba City) for sharing your Chicken Burger recipe! She said they are great on a toasted bun topped with lettuce, tomato, ketchup and mustard!

### Chicken Burgers

- 1 lbs Ground Chicken (dark meat)
- 3 Tbsp. Italian style bread crumbs
- ¼ c. Grated Parmesan Cheese
- 1 Egg
- ¼ tsp Salt
- ½ tsp Pepper



Mix all ingredients and form into 4 patties. Then heat 2 tsp vegetable oil on medium in a 12 inch skillet. Add patties and cook 8-10 minutes or until cooked (165 degrees) turning just once.

## Energy Efficiency Tip of the Month

When streaming online content, use the smallest device that makes sense for the number of people watching. Avoid streaming on game consoles, which use 10 times more power than streaming through a tablet or laptop.

Source: [energy.gov](http://energy.gov)



## Vegetation Management

Zielie's Tree Service will have a representative permitting the Jerrett Substation in Grant County. The representative will talk to members and land owners about trees that will need to be trimmed or cut to Scenic Rivers specifications. After permitting the tree crews will start trimming and cutting.

### It is important for SREC to maintain its rights-of-way for the following reasons:

- Accessibility for field crews, vehicles and equipment
- Fire prevention
- Reliable electric service
- Quality service with the reduction of outages and blinks
- Safety for workers and the public
- Meeting state and federal code requirements

On a daily basis, SREC employees and contractors are working throughout the area, at times on your property, to operate and maintain the electric system and our rights-of-ways. We appreciate your cooperation. If you have questions, please contact Jay at [jgardner@srec.net](mailto:jgardner@srec.net) or call 800-236-2141, ext. 566.

## WATT'S HAPPENING

*Watt's Happening* is published monthly as an information service to the member-owners of Scenic Rivers Energy Cooperative.

Any questions or comments can be directed to *Watt's Happening*, c/o Heidi Pierce, Editor, Scenic Rivers Energy Cooperative, 231 North Sheridan, Lancaster, WI 53813 or telephone (608) 723-2121 or toll free 800-236-2141.

[www.sre.coop](http://www.sre.coop)

Steve Lucas ..... CEO  
Heidi Pierce ..... Editor

Our board of directors consists of Chuck Simmons, Don Schaefer, Sandra Davidson, Ellen Conley, Jack Larson, Larry Butson, Delbert Reuter, Steve Carpenter and Marcus Saegrove.



printed on recycled paper