

Light Notes

AUGUST 2023

Scenic Rivers Energy Cooperative

Lancaster, Darlington and Gays Mills, Wisconsin

Charlie Riding Off into the Sunset courtesy of Rhonda and Richard Wiedenback, Lancaster

UNCLAIMED CAPITAL CREDITS

Please visit Scenic Rivers Energy Cooperative's website at sre.coop/unclaimedfunds for a complete list of member names and address identified as having unclaimed property with the cooperative. You may claim these funds by contacting the Cooperative and furnishing proof of your legal interest in such funds on or before September 5, 2023. If you have questions, please contact our office at 1-800-236-2141.

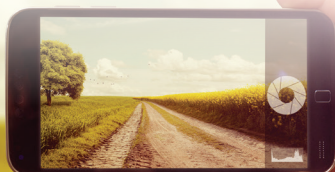
Pub.: 7/5, 7/6/23. WNAXLP



Member Photo Contest "The Power in our Cooperative"

We're changing things up and kicking off our annual photo contest. We are searching for photos that feature power in our cooperative. This could be electrical power, human power or natural power. The winning members' photos will be featured each month in this very newsletter in 2024 and may also be used on our social media pages or in other cooperative publications. Members of all ages and abilities are able to participate at no cost. Please visit us at www.sre.coop/photo-contest to get all the details and to enter.

ENTRIES ARE DUE AUGUST 25, 2023.



with Farmers

Farm season means sharing the road with large farm equipment, which can be wide and slow. Farmers must move slowly in large equipment, but public roads are often the only way to get from point A to point B.

When you find yourself following or meeting large farm equipment on the road, take a deep breath and **do the following to keep everyone safe:**

1

Be alert and cautious, and give large farm equipment and other slow-moving vehicles space.

2

Do not pass in a "No Passing Zone," or in any area where it is not safe to do so, such as intersections, bridges and railroad crossings, among others.

3

Make sure the tractor is not trying to make a left turn before you pass on the left.

4

Do not tailgate. Following too closely means you could be in the operator's blind spot.

5

Be careful when you do get the chance to pass. Oftentimes, farmers will move their equipment over when it is safe to do so.

THE PEOPLE BEHIND YOUR POWER



Jeff Roesch
Member Services Assistant
Years of Service - 21 years
Family - Wife - Tracy;
 Dog - Nut
Hobbies - Hunting and
 spending time outdoors

RIGHT-OF-WAY MAINTENANCE NOTES



Zielie's Tree Service will be trimming the Mt. Hope Substation north and west circuits in Grant County.

Zielie's Tree Service and Scenic Rivers Energy employees will be spraying the Gays Mills Substation in Crawford County.

Badgerland Utility Solutions will be inspecting underground transformers and cabinets on the Argyle Substation in Lafayette County.

It is important for SREC to maintain its rights-of-way for the following reasons:

- Accessibility for field crews, vehicles and equipment
- Fire prevention
- Reliable electric service
- Quality service with the reduction of outages and blinks
- Safety for workers and the public
- Meeting state and federal code requirements

On a daily basis, SREC employees and contractors may be working throughout the area, and at times on your property, to operate and maintain the electric system and our rights-of-ways. If you have questions, please contact us at 800-236-2141.



ElectricSense®

2023 incentive forms are available at the Co-op office and online. Incentives issued while funds are available.

Additional terms & conditions on incentive forms; please read thoroughly before submitting.

A partial list of rebates available include:

Ag/Commercial/Industrial

Commercial vending machine controls	\$25
Circulation fan	\$1/inch
Exhaust fan	\$1/inch
Dairy plate cooler/well water pre-cooler	\$500/each
Dairy refrigeration heat recovery	\$300/each
Low/zero energy livestock waterer (≤500 watts, insulated tank)	\$50/each
Variable frequency drive (VFD) (\$1,000 max.)	\$30/HP

Custom rebates are available for agricultural and commercial accounts

Appliances

Clothes dryer (electric)*	\$25/each
Clothes washer*	\$25/each
Dehumidifier*	\$25/each
Dishwasher*	\$25/each
Freezer (≥10 cubic ft.)*	\$25/each
Inductive Range	\$25/each
Refrigerator (≥10 cubic ft.)*	\$25/each
Recycle a working freezer, refrigerator or room air conditioner	\$25/unit

*Must be an ENERGY STAR appliance

Heating & Cooling (HVAC)

New furnace with ECM blower motor	\$35/each
Heat Pumps	
Air source & mini-split	\$300/ton
Commercial air source & PTHPs	\$300/ton
Geothermal	\$500/ton

Lighting

LED bulb (residential; 5 bulb min.)	\$0.50/bulb
LED fixture (non-residential)	\$0.50 per 800 lumens

Water Heating

Heat pump water heater	\$600/each
Integrated (all-in-one) units; Uniform Energy Factor (UEF) 2.00+	
Residential high-efficiency water heater*	
75-99 gallons, UEF 0.88+	\$300/each
100+ gallons, UEF 0.88+	\$600/each
Commercial water heater*	
75-99 gallons	\$300/each
100+ gallons	\$600/each

*Must be enrolled in an energy management strategy

For more information: www.sre.coop/energy-rebates

Light Notes

Light Notes is a monthly newsletter for members of SREC. Please contact us with questions or comments at 206 County Road K, Lancaster, WI 53813, via email at srec@srec.net, via phone at (608) 723-2121 or (800) 236-2141.



www.sre.coop

Steve Lucas CEO

Our board of directors consists of Chuck Simmons, Don Schaefer, Sandra Davidson, Ellen Conley, Jack Larson, Delbert Reuter, Steve Carpenter, Marcus Saegrove and Lily Long.



This institution is an equal opportunity provider and employer.